

В ПОСЛЕДНИЙ ПУТЬ

Grave, severo

funerale

Доминиров

Handwritten musical score for a symphony orchestra. The score is written on 12 staves, organized into three systems of four staves each. The notation includes various musical symbols such as notes, rests, and dynamic markings. The first system (staves 1-4) begins with a key signature of one flat and a 4/4 time signature. The second system (staves 5-8) continues the composition, featuring a section marked 'Grave, severo' and another marked 'funerale'. The third system (staves 9-12) concludes the piece with a final 'funerale' marking. The score is characterized by its dense notation and the use of various dynamic markings to convey the intended mood and volume.

fff

fff

fff

fff div

fff div

fff Grave, severo

p legato

funerale

mp legato

mp legato

mp legato

mp legato

p legato

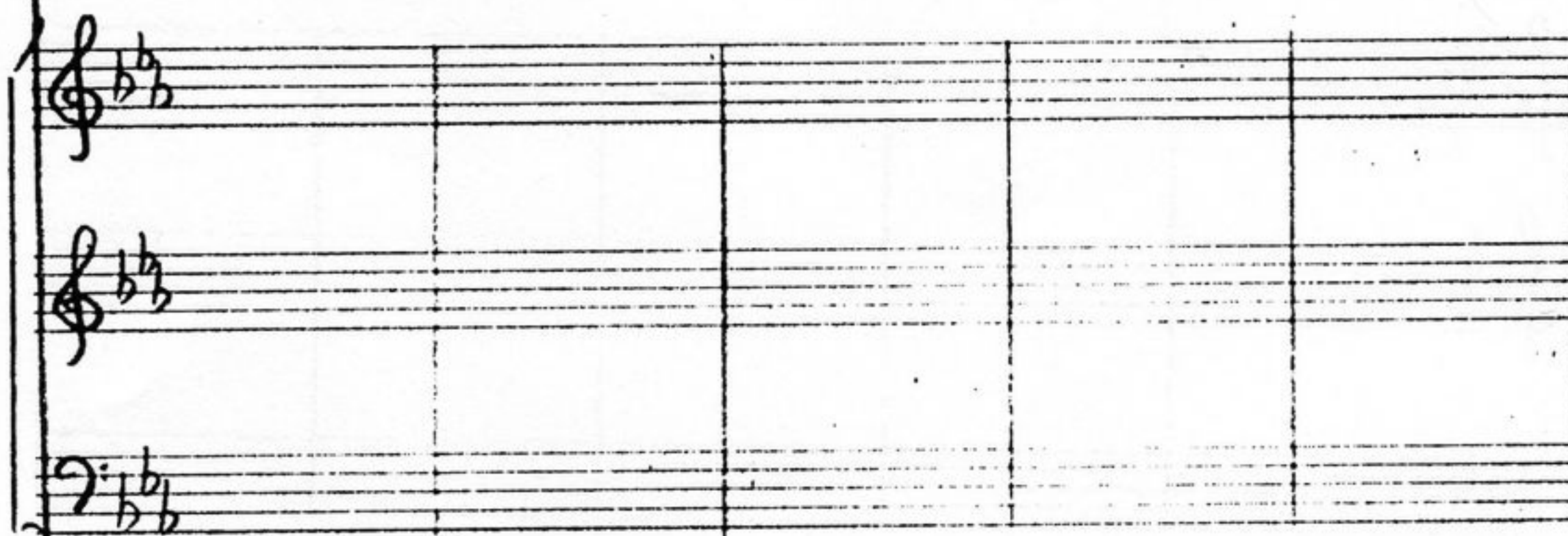
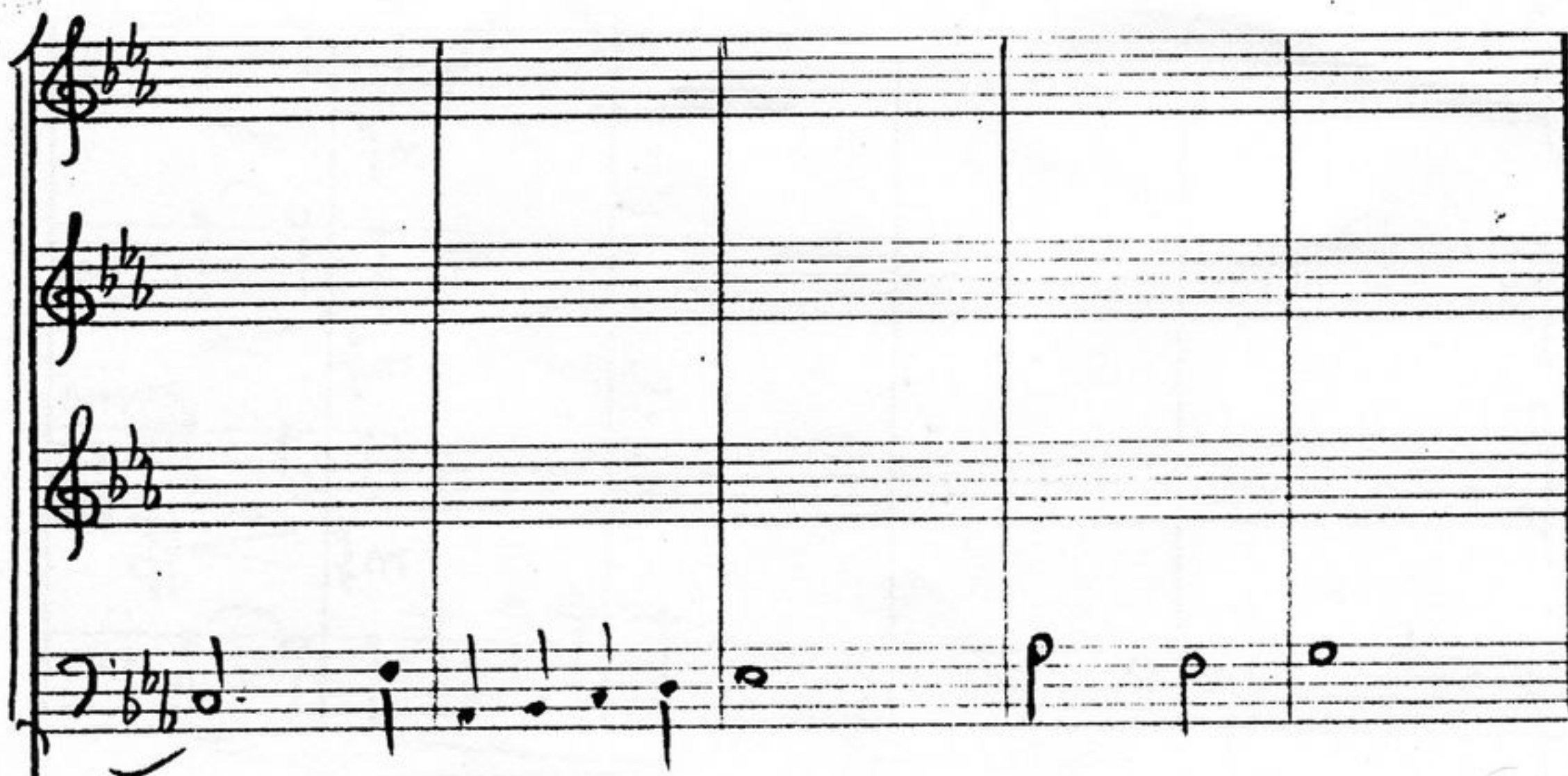


Handwritten musical notation on a five-staff system. The first three staves are empty, each beginning with a treble clef and a key signature of two flats (B-flat and E-flat). The fourth staff contains a bass clef and a key signature of two flats. It begins with a whole note chord (F major triad) and continues with a sequence of notes: a half note F, a quarter note G, a quarter note A, a half note B-flat, and a quarter note C.

Handwritten musical notation on a five-staff system. The first three staves are empty, each beginning with a treble clef and a key signature of two flats (B-flat and E-flat). The fourth staff contains a bass clef and a key signature of two flats. It is empty.

Handwritten musical notation on a five-staff system. The first three staves contain a sequence of notes: a half note F, a quarter note G, a quarter note A, a half note B-flat, and a quarter note C. The fourth staff contains a sequence of notes: a half note F, a quarter note G, a quarter note A, a half note B-flat, and a quarter note C. The fifth staff contains a sequence of notes: a half note F, a quarter note G, a quarter note A, a half note B-flat, and a quarter note C.







Handwritten musical score, first system. It consists of four staves. The first three staves are in treble clef with a key signature of two flats (B-flat and E-flat). The fourth staff is in bass clef. The notation includes various musical symbols such as notes, rests, and dynamic markings like *mf* (mezzo-forte). There are also some handwritten annotations, including the word "2 тема" (2nd theme) and a "P" (piano) marking. The system concludes with a double bar line and a repeat sign.

Handwritten musical score, second system. It consists of three staves, all in treble clef with a key signature of two flats (B-flat and E-flat). The staves are mostly empty, with only a few notes and rests visible, suggesting a continuation of the musical piece.

Handwritten musical score, third system. It consists of six staves, all in treble clef with a key signature of two flats (B-flat and E-flat). The notation is more complex, featuring many notes, rests, and dynamic markings. There are also some handwritten annotations, including the word "2 тема" (2nd theme) and a "P" (piano) marking. The system concludes with a double bar line and a repeat sign.



2

Handwritten musical notation for the first system, measures 1-5. The system consists of four staves: three treble clefs and one bass clef. The key signature is two flats (B-flat and E-flat). The first staff has a treble clef and a key signature of two flats. The second staff has a treble clef and a key signature of two flats. The third staff has a treble clef and a key signature of two flats, with handwritten notes and rests. The fourth staff has a bass clef and a key signature of two flats. The notation includes various note values, rests, and accidentals.

Handwritten musical notation for the second system, measures 6-10. The system consists of four staves: three treble clefs and one bass clef. The key signature is two flats (B-flat and E-flat). The first staff has a treble clef and a key signature of two flats, with handwritten notes and rests. The second staff has a treble clef and a key signature of two flats. The third staff has a treble clef and a key signature of two flats. The fourth staff has a bass clef and a key signature of two flats. The notation includes various note values, rests, and accidentals.

12

Handwritten musical notation for the third system, measures 11-15. The system consists of five staves: four treble clefs and one bass clef. The key signature is two flats (B-flat and E-flat). The first staff has a treble clef and a key signature of two flats. The second staff has a treble clef and a key signature of two flats. The third staff has a treble clef and a key signature of two flats. The fourth staff has a treble clef and a key signature of two flats. The fifth staff has a bass clef and a key signature of two flats. The notation includes various note values, rests, and accidentals.



3

Handwritten musical score for the first system, measures 1-4. The system consists of five staves. The first three staves are treble clef, and the fourth and fifth are bass clef. The key signature is B-flat major (two flats). The time signature is 3/4. The notation includes various notes, rests, and dynamic markings. The first measure has a piano (p) marking. The second measure has a mezzo-piano (mp) marking. The third and fourth measures have a mezzo-piano (mp) marking. The fifth measure has a piano (p) marking.

Handwritten musical score for the second system, measures 5-8. The system consists of five staves. The first three staves are treble clef, and the fourth and fifth are bass clef. The key signature is B-flat major (two flats). The time signature is 3/4. The notation includes various notes, rests, and dynamic markings. The first measure has a piano (p) marking. The second measure has a mezzo-piano (mp) marking. The third and fourth measures have a mezzo-piano (mp) marking. The fifth measure has a piano (p) marking.

13

Handwritten musical score for the third system, measures 9-12. The system consists of five staves. The first three staves are treble clef, and the fourth and fifth are bass clef. The key signature is B-flat major (two flats). The time signature is 3/4. The notation includes various notes, rests, and dynamic markings. The first measure has a piano (p) marking. The second measure has a mezzo-piano (mp) marking. The third and fourth measures have a mezzo-piano (mp) marking. The fifth measure has a piano (p) marking.



Handwritten musical score, first system. It consists of five staves. The first staff has a treble clef and a key signature of two flats (B-flat, E-flat). The second staff has a treble clef and a key signature of two flats. The third staff has a treble clef and a key signature of two flats, with a *cresc.* marking. The fourth staff has a bass clef and a key signature of two flats, with a *cresc.* marking. The fifth staff has a bass clef and a key signature of two flats. The system concludes with a double bar line and a final chord. Dynamics include *mp* (mezzo-piano) and *mp* (mezzo-piano).

Handwritten musical score, second system. It consists of five staves. The first staff has a treble clef and a key signature of two flats, with a *cresc.* marking. The second staff has a treble clef and a key signature of two flats. The third staff has a treble clef and a key signature of two flats. The fourth staff has a bass clef and a key signature of two flats, with a *p* (piano) marking. The fifth staff has a bass clef and a key signature of two flats, with a *mp* (mezzo-piano) marking. The system concludes with a double bar line and a final chord.

Handwritten musical score, third system. It consists of five staves. The first staff has a treble clef and a key signature of two flats. The second staff has a treble clef and a key signature of two flats. The third staff has a treble clef and a key signature of two flats, with a *cresc.* marking. The fourth staff has a treble clef and a key signature of two flats, with a *pp* (pianissimo) marking. The fifth staff has a bass clef and a key signature of two flats, with a *cresc.* marking and a *poco* (poco) marking. The system concludes with a double bar line and a final chord. Dynamics include *pp* (pianissimo), *cresc.* (crescendo), *poco* (poco), and *mp* (mezzo-piano).



14] *mesto rubato*

Handwritten musical score for the first system, measures 1-4. The notation is in treble and bass staves with a key signature of two flats (B-flat and E-flat). The first measure contains a whole note chord. The second measure contains a half note chord. The third and fourth measures are empty staves.

Handwritten musical score for the second system, measures 5-8. The notation is in treble and bass staves. The first measure contains a whole note chord. The second measure contains a half note chord. The third and fourth measures are empty staves.

14] *mesto rubato*

Handwritten musical score for the third system, measures 9-12. The notation is in treble and bass staves. The first measure contains a whole note chord. The second measure contains a half note chord. The third and fourth measures are empty staves.



Handwritten musical score system 1. It consists of four staves. The first staff has a treble clef and a key signature of two flats. The second and third staves have a treble clef and a key signature of two flats. The fourth staff has a bass clef and a key signature of two flats. The notation includes notes, rests, and dynamic markings: *mf*, *ff*, *p*, *mp*, and *f*. There are also crescendo and decrescendo hairpins. A measure number '15' is written above the first staff.

Handwritten musical score system 2. It consists of three staves. The first two staves have a treble clef and a key signature of two flats. The third staff has a bass clef and a key signature of two flats. The notation includes notes, rests, and dynamic markings: *p*, *cresc*, and *ff*. There are also crescendo and decrescendo hairpins.

Handwritten musical score system 3. It consists of six staves. The first four staves have a treble clef and a key signature of two flats. The fifth and sixth staves have a bass clef and a key signature of two flats. The notation includes notes, rests, and dynamic markings: *div*, *cresc*, *mp*, *f*, and *ff*. There are also crescendo and decrescendo hairpins. A measure number '15' is written above the first staff.



Handwritten musical notation on four staves. The first staff uses a treble clef and a key signature of two flats (B-flat and E-flat). The notation is sparse, featuring vertical stems and some circular notes. The second and third staves also use treble clefs and the same key signature, with similar sparse notation. The fourth staff uses a bass clef and the same key signature, with a few circular notes and a long horizontal line spanning across the staff.

Handwritten musical notation on three staves. The first staff uses a treble clef and a key signature of two flats. It contains several circular notes and vertical stems. The second staff also uses a treble clef and the same key signature, with circular notes and vertical stems. The third staff uses a bass clef and the same key signature, with vertical stems and some circular notes.

Handwritten musical notation on seven staves. The first two staves are highly dense with many vertical stems and some circular notes. The third staff uses a treble clef and a key signature of two flats, with vertical stems and some circular notes. The fourth staff uses a treble clef and the same key signature, with vertical stems and some circular notes. The fifth staff uses a treble clef and the same key signature, with vertical stems and some circular notes. The sixth staff uses a treble clef and the same key signature, with vertical stems and some circular notes. The seventh staff uses a bass clef and the same key signature, with vertical stems and some circular notes.



Handwritten musical score, first system. It consists of four staves. The first staff begins with a treble clef, a key signature of two flats (B-flat and E-flat), and a 2/4 time signature. The notation includes various notes, rests, and dynamic markings such as *ap* (pianissimo) and *fff* (fortississimo). A circled number '16' is visible in the second measure of the first staff.

Handwritten musical score, second system. It consists of four staves. The first staff begins with a treble clef, a key signature of two flats, and a 2/4 time signature. The notation includes various notes, rests, and dynamic markings such as *resorte* (ritornello), *fff*, and *div* (diviso). The second staff contains a complex, dense passage of notes.

Handwritten musical score, third system. It consists of four staves. The first staff begins with a treble clef, a key signature of two flats, and a 2/4 time signature. The notation includes various notes, rests, and dynamic markings such as *fff*, *div*, and *resorte*. The second staff contains a complex, dense passage of notes.



16a

Handwritten musical score for the first system, measures 1-4. The system consists of four staves. The first three staves are in treble clef with a key signature of two flats (B-flat and E-flat). The fourth staff is in bass clef. The first staff has a dynamic marking of *dim* and a tempo marking of *allegro* (written as 'al' and 'lo'). The second and third staves have a dynamic marking of *sf dim*. The fourth staff has a dynamic marking of *dim*. The notation includes various note values, rests, and slurs.

Handwritten musical score for the second system, measures 5-8. The system consists of four staves. The first three staves are in treble clef with a key signature of two flats. The fourth staff is in bass clef. The first staff has a dynamic marking of *dim*. The second and third staves have a dynamic marking of *sf*. The fourth staff has a dynamic marking of *dim*. The notation includes various note values, rests, and slurs.

Handwritten musical score for the third system, measures 9-12. The system consists of four staves. The first three staves are in treble clef with a key signature of two flats. The fourth staff is in bass clef. The first staff has a dynamic marking of *sf dim*. The second and third staves have a dynamic marking of *sf*. The fourth staff has a dynamic marking of *dim*. The notation includes various note values, rests, and slurs.



165

Handwritten musical score for the first system, measures 165-168. The score is written on five staves. The first four staves are treble clef, and the fifth is bass clef. The key signature has two flats (B-flat and E-flat). The time signature is 4/4. The notation includes various notes, rests, and dynamic markings. The word "CODA" is written above the final measure of the system.

Measures 165-168:

- Staff 1: *mf*, *sf*, *sf*, *sf*
- Staff 2: *mf*, *sf*, *sf*, *sf*
- Staff 3: *mf*, *sf*, *sf*, *sf*
- Staff 4: *mf*, *sf*, *sf*, *sf*
- Staff 5: *mf*, *sf*, *sf*, *sf*

CODA

Handwritten musical score for the second system, measures 169-172. The score is written on five staves. The first four staves are treble clef, and the fifth is bass clef. The key signature has two flats (B-flat and E-flat). The time signature is 4/4. The notation includes various notes, rests, and dynamic markings. The word "CODA" is written above the final measure of the system.

Measures 169-172:

- Staff 1: *mf*, *sf*, *sf*, *sf*
- Staff 2: *mf*, *sf*, *sf*, *sf*
- Staff 3: *mf*, *sf*, *sf*, *sf*
- Staff 4: *mf*, *sf*, *sf*, *sf*
- Staff 5: *mf*, *sf*, *sf*, *sf*

CODA